

BIC Boat Sportyak 245 Dinghy Boat & Electric Motor for sale



BIC Boats Sportyak 245

Rating: Not Rated Yet

[Ask a question about this product](#)

Description

BIC Boats - Sportyak 245

3-man Dinghy Boat

BIC Sportyak 245 @ Rs. 75,000/-

Inclusive full set as listed below, inclusive of VAT.

Transport: Approx Rs.3000 extra.

Delivered anywhere in India via VRL Logistics in approx 4-6 days.

Colours: Blue

Exceptionally light, solidly built, incredibly long-lasting and stable, **BIC boats** have built a solid reputation in the world of leisure boating.

The Sportyak 245 is the result of 35 years of experience and development ! This mid sized dinghy combines the best features of those other legendary boats that are the BIC 252 and the Sportyak.

Light weight, easy to transport, giving you excellent glide when you row, it can also be fitted with either a thermal or electric motor.

From carrying men and equipment to an anchored boat, to getting out to the best fishing spots, to being a great toy for the kids...

There are almost no limits for this super safe and versatile boat !



Specifications

Length : 2.45m - 8'0.5"

Width : 1.20m - 3'11.2"

Weight : 39Kg - 86 lbs

Capacity : 3 pers./639 lbs

Engine maxi power: 3 CV

Accessories included with the dinghy:

2 oars, 3 rowlocks, 3 x rowlock brackets, 1 rope, 1 seat, 2-wheel system.



Exceptional stability

The catamaran hull shape of the Sportyaks 213 and 245 gives them much more stability than all flat or V hulls. This is a major advantage for hunting, fishing or ferrying equipment over to an anchored boat. The Sportyak 245 can comfortably accommodate three people who can, if necessary change sides without any risk of capsizing.



Comparison Sportyak 245 versus V Hull

As soon as the weight is off-centre, a V-hull becomes unstable and dangerous, unlike the double catamaran shape hull of the Sportyak 245, which provides high stability and therefore prevents capsizing.



Sportyak 245 - Priority to stability

One, two or three people can fit comfortably in a 245. The double rowing position allows you to choose your seating configuration. That means you can adjust to any size oarsman for efficient rowing without compromising balance.



The safety of the double hull

The double hull gives added safety to passengers. Even if a very violent impact made a hole on the outside hull, the inner hull would provide sufficient flotation to get back to shore.

- 1- Bumper
- 2- Outside hull
- 3- Inner hull



Light weight

The Sportyak 213 and the Sportyak 245 are light which is an essential characteristic for a boat that is most of the time carried by hand and loaded onto roof racks. It is thanks to their double hull structure that even though they are very light, there has been no compromise on safety aspects.

Easily carried

The Sportyak 213 and the Sportyak 245 are particularly easy to carry. Several carry-handles have been positioned around the Sportyak 245 to facilitate its beach-launching and handling. The Sportyak 213 can be fitted with a roller kit.

The Sportyak 245 is fitted with wide rollers integrated into the design of the hull which do not affect in any way the boat's performance on water, whether it is being rowed or powered by an outboard engine.



Solidity

The toughness of polyethylene

The Sportyak 213 and the Sportyak 245 are made of polyethylene which makes them virtually indestructible. You don't have to worry about leaving them in dinghy racks or on the beach. UV rays, salt and every day impacts have no effect on them.

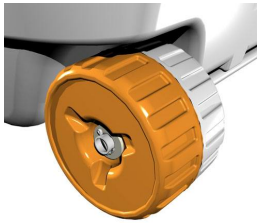
When no longer in use, these boats are entirely recyclable.

Catamaran shape and integrated wheels

The catamaran hull gives the best possible stability. It means you can load up on one side of the boat without fear of capsizing. This shape with flat lateral sections gives also an exceptional glide, with an efficient anti-drift. The wheels are integrated into the design of the hull.

Integrated handles are user friendly

The various carry handles make the boat easy to carry for one or more people. It weighs in at just 39 kg / 86lbs, making it easy to load onto a roof rack.



All-terrain wheels make transport easy

The Sportyak 245 is fitted with two wide rollers for easy handling over beaches, banks and jetties. The wheels are integrated into the design of the hull and don't in any way affect its performance on water. You can load all your equipment in the boat and take it easily down to the water's edge.

The details that make all the difference

The rowing seat is fitted with integral "glove compartments", and the carry handles and other openings make it easy to fit an anti-theft cable around the boat. The flat rear design was also designed for simple, safe upright storage, taking up less floor area.



